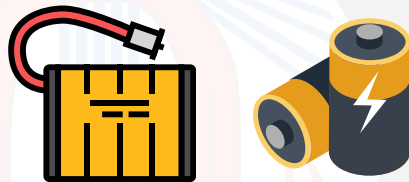


HOW TO HANDLE LITHIUM-ION BATTERIES

DO'S



Purchase and use devices that are listed by a qualified testing lab.



Only use the battery and charging cord designed for the device.

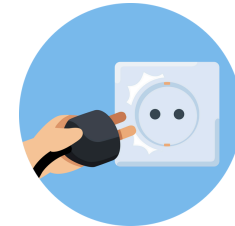


Keep devices and batteries at room temperature.



Store batteries away from flammable objects.

DON'TS



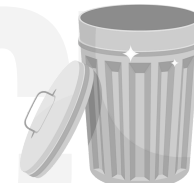
Do not leave devices plugged in once fully charged.



Do not charge the device under your pillow, on your bed, or on a couch.



Do not charge devices at temperatures below 32°F or above 105°F.



Do not discard lithium-ion batteries in the trash.

FIRE PROTECTION SYSTEMS SAVE LIVES!

In addition to following the tips above, choosing to install and maintain fire and life safety systems can *save lives and protect property.*